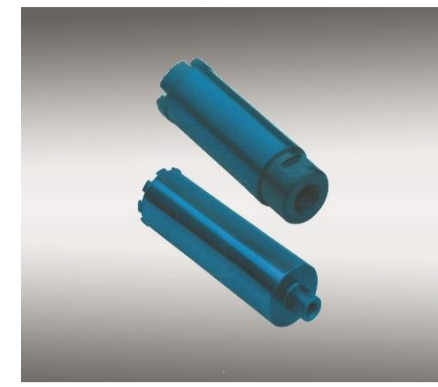


金刚石湿型空心钻头
激光焊接湿型打孔钻

Laser Welded Core Drill Bits Wet



MACHINE TYPE: Suitable for Portable Hand-Held Core Drill Rigs, Stationary Core Drill Rigs

WORKINGPIECE: Professional wet Blades for Blocks, bricks, paving stabs, Reinforced concrete, other med hard materials, stones.

SIZE (Diameter x Length)	SIZE (Diameter x Length)	MAX RPM	Height of Segment	STD PACK	PART #
1" x 14"	25.00 x 350.0 mm	4,000	8 / 10 mm	1	25472
1-1/8" x 14"	28.00 x 350.0 mm	3,000	8 / 10 mm	1	25485
1-1/4" x 14"	32.00 x 350.0 mm	3,000	8 / 10 mm	1	25498
1-3/8" x 14"	35.00 x 350.0 mm	2,000	8 / 10 mm	1	25501
1-1/2" x 14"	38.00 x 350.0 mm	2,000	8 / 10 mm	1	25514
1-3/4" x 14"	45.00 x 350.0 mm	2,000	8 / 10 mm	1	25527
2" x 14"	50.00 x 350.0 mm	2,000	8 / 10 mm	1	25530
2-1/4" x 14"	57.00 x 350.0 mm	1,300	8 / 10 mm	1	25543
2-1/2" x 14"	64.00 x 350.0 mm	1,300	8 / 10 mm	1	25556
3" x 14"	76.00 x 350.0 mm	1,300	8 / 10 mm	1	25569
3-1/2" x 14"	89.00 x 350.0 mm	1,000	8 / 10 mm	1	25572
4" x 14"	102.0 x 350.0 mm	1,000	8 / 10 mm	1	25585
4-1/4" x 14"	108.0 x 350.0 mm	800	8 / 10 mm	1	25598
4-1/2" x 14"	115.0 x 350.0 mm	800	8 / 10 mm	1	25601
5" x 14"	125.0 x 350.0 mm	800	8 / 10 mm	1	25614
6" x 14"	150.0 x 350.0 mm	665	8 / 10 mm	1	25627
7" x 14"	180.0 x 350.0 mm	600	8 / 10 mm	1	25630
8" x 14"	200.0 x 350.0 mm	500	8 / 10 mm	1	25643
9" x 14"	230.0 x 350.0 mm	450	8 / 10 mm	1	25656
10" x 14"	250.0 x 350.0 mm	400	8 / 10 mm	1	25669
12" x 14"	300.0 x 22.23 mm	330	8 / 10 mm	1	25772
14" x 14"	350.0 x 22.23 mm	285	8 / 10 mm	1	25785

金刚石湿型空心钻头
激光焊接波纹齿钻头

Welded Turbo Segment Core Drill Bits



MACHINE TYPE: Suitable for Portable Hand-Held Core Drill Rigs, Stationary Core Drill Rigs

WORKINGPIECE: Professional wet Blades for Blocks, bricks, paving stabs, Reinforced concrete, other med hard materials, stones.

SIZE (Diameter x Length)	SIZE (Diameter x Length)	MAX RPM	Height of Segment	STD PACK	PART #
1" x 6"	25.00 x 350.0 mm	4,000	8 / 10 mm	1	25798
1-1/8" x 6"	28.00 x 350.0 mm	3,000	8 / 10 mm	1	25801
1-1/4" x 6"	32.00 x 350.0 mm	3,000	8 / 10 mm	1	25814
1-3/8" x 6"	35.00 x 350.0 mm	2,000	8 / 10 mm	1	25827
1-1/2" x 6"	38.00 x 350.0 mm	2,000	8 / 10 mm	1	25830
1-3/4" x 6"	45.00 x 350.0 mm	2,000	8 / 10 mm	1	25843
2" x 6"	50.00 x 350.0 mm	2,000	8 / 10 mm	1	25856
2-1/4" x 6"	57.00 x 350.0 mm	1,300	8 / 10 mm	1	25869
2-1/2" x 6"	64.00 x 350.0 mm	1,300	8 / 10 mm	1	25872
3" x 6"	76.00 x 350.0 mm	1,300	8 / 10 mm	1	25885
3-1/2" x 6"	89.00 x 350.0 mm	1,000	8 / 10 mm	1	25898
4" x 6"	102.0 x 350.0 mm	1,000	8 / 10 mm	1	25901
4-1/2" x 6"	115.0 x 350.0 mm	800	8 / 10 mm	1	25914
5" x 6"	125.0 x 350.0 mm	800	8 / 10 mm	1	25927
6" x 6"	150.0 x 350.0 mm	665	8 / 10 mm	1	25930

金刚石湿型空心钻头
螺纹槽激光焊接钻头

Laser Welded Core Bits with Slotted Core



MACHINE TYPE: Suitable for Portable Hand-Held Core Drill Rigs, Stationary Core Drill Rigs

WORKINGPIECE: Professional wet Blades for Blocks, bricks, paving stabs, Reinforced concrete, other med hard materials, stones.

SIZE (Diameter x Length)	SIZE (Diameter x Length)	MAX RPM	Height of Segment	STD PACK	PART #
2" x 6"	50.00 x 350.0 mm	2,000	8 / 10 mm	1	25943
2-1/4" x 6"	57.00 x 350.0 mm	1,300	8 / 10 mm	1	25956
2-1/2" x 6"	64.00 x 350.0 mm	1,300	8 / 10 mm	1	25969
3" x 6"	76.00 x 350.0 mm	1,300	8 / 10 mm	1	25972
3-1/2" x 6"	89.00 x 350.0 mm	1,000	8 / 10 mm	1	25985
4" x 6"	102.0 x 350.0 mm	1,000	8 / 10 mm	1	25998
4-1/2" x 6"	115.0 x 350.0 mm	800	8 / 10 mm	1	26001
5" x 6"	125.0 x 350.0 mm	800	8 / 10 mm	1	26014
6" x 6"	150.0 x 350.0 mm	665	8 / 10 mm	1	26027